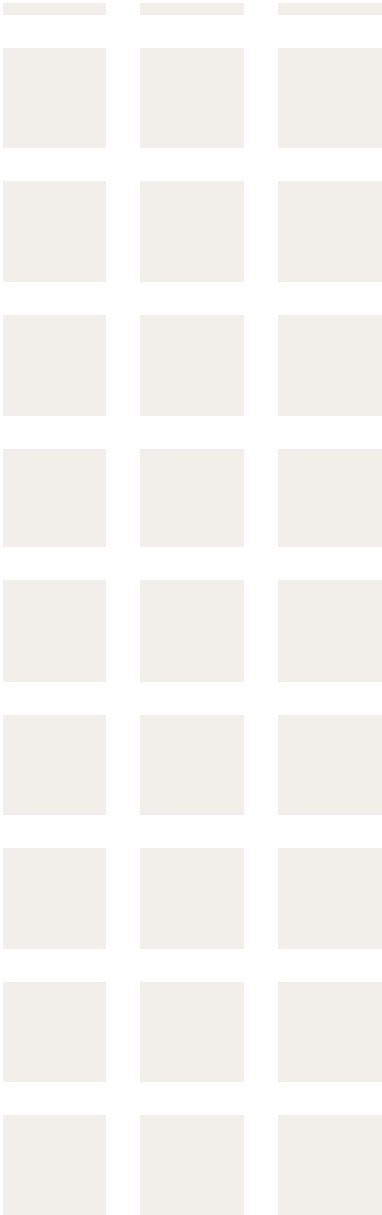




AMUNDI FUNDS

Absolute Volatility Euro Equities

Simplified Prospectus - June 2011



This simplified prospectus contains information about Amundi Funds Absolute Volatility Euro Equities, a sub-fund (the “Sub-Fund”) of Amundi Funds (the “Fund”), an umbrella fund currently organised as a “société d’investissement à capital variable” created as an unincorporated mutual investment fund (“Fonds commun de Placement”) on July 18, 1985 under Luxembourg law and qualifying as an undertaking for collective investment in transferable securities (UCITS) under part I of the Luxembourg law of 20 December 2002. Its registered office is situated at 5 allée Scheffer, L-2520 Luxembourg. The Fund is registered under number B 68.806 at the register of commerce at the district court of Luxembourg.

The Fund contains a large number of other sub-funds, which are described in the Fund’s full prospectus. For further details, the current full prospectus of the Fund should be consulted. Terms in capitals where not defined in this document are defined in the Fund’s full prospectus.

For details about the Sub-Fund’s holdings please see the Fund’s most recent annual or semi-annual report. The full prospectus and the latest periodical reports may be obtained on request, free of charge, from Amundi Luxembourg or, as the case may be, the local Representative in the relevant country.

Subscriptions may only be based on the latest prospectus and local offering document (if applicable), as authorised by the Supervisory Authority of the relevant country.

In the event of any inconsistency, ambiguity or discrepancy in relation to the meaning of any wording or phrasing in any translation, the English version shall prevail.

PART A: GENERAL INFORMATION

■ Introduction to the Absolute Return Sub-Funds

Unless otherwise mentioned in a particular Sub-Fund's description and always subject to all applicable investment limitations (see "Further Information: Investment Powers and Limitations" of the full prospectus), the following principles will apply to the Sub-Funds:

- Each Sub-Fund may invest in financial derivative instruments for hedging purpose and for the purpose of efficient portfolio management, while following, on the level of the underlying values, the investment limit(s) laid down in the investment policy of each Sub-Fund.
- Each Sub-Fund is also authorized to employ techniques and instruments relating to transferable securities and money market instruments under the conditions and within the limits laid down under Chapter XX "Further Information", B "Additional Investment Restrictions", points 1.4 to 1.6 of the full prospectus.

■ Investment objective and policy

The objective of this Sub-Fund consists in seeking a performance of 7% p.a. minus fees applicable to each relevant Class of Shares and in offering an exposure to the volatility of the equity markets of Euroland within a framework of controlled risk. The exposure of the Sub-Fund to volatility is controlled according to an indicative target grid depending on the volatility level of the equity markets of Euroland.

Volatility measures the dispersion of an asset's returns around its average; such indicator is inherently variable. Consequently, the risk control is monitored and managed through the Sub-Fund's value-at-risk (VaR). The Sub-Fund is continuously managed so as not to exceed a maximum estimated yearly VaR (estimated annual ex-ante VaR) of 35%. This means that, statistically and under normal market conditions, the portfolio is constructed so as not to vary by more than 35% over one year with a confidence interval of 95%.

In order to be exposed to the volatility of the equity markets of Euroland, the Sub-Fund will invest in options on the DJ EuroStoxx 50 index having a one year average maturity and being listed on an Authorised Market. Besides the derivatives, the Sub-Fund invests up to 100% of its net assets in money market instruments.

This approach is combined with a systematic hedging of the portfolio's sensitivity towards interest rates risk as well as the risk on equities indices.

The use of derivatives will be an integral part of the investment policy: futures contracts, options, swaps, traded either on Authorised Markets or OTC, will be used for hedging against and/or overexposing to risks of equity indices, interest rates, volatility and dividends.

The Sub-Fund may enter into temporary acquisitions and disposals of securities (repos & reverse repos), for cash management as well as efficient portfolio management purposes.

In general terms, leverage is not sought via the use of the instruments outlined above.

The Sub-Fund may invest up to 10% of its net assets in units/shares of UCITS and/or other UCIs.

The base currency of the Sub-Fund is Euro.

■ Risk profile

Investments in Absolute Return Sub-Funds are primarily subject to interest rate, credit and prepayment risks relating to bonds. In addition, the assets of such Sub-Funds may also be affected by market fluctuations due to the investments in financial instruments and equities.

Statistical monitoring is performed for each of the Absolute Return Sub-Funds. Thus, this monitoring does, under no circumstances, guarantee a minimum performance. Investors are informed that they might not recover all or part of their initial investments.

In general terms, none of the Absolute Return Sub-Funds seeks a leverage effect through the commitments that imply the derivatives outlined above. The fact remains that, in absolute terms, any Sub-Fund using derivative instruments for whatever use, can be considered as integrating a leverage effect to some extent. Furthermore, in accordance with the provision of the 2002 Law, the Fund is not authorised to borrow, except the borrowing made on a temporary basis, those permitting the acquisition of immovable property essential for the direct pursuit of its business as well as back-to-back loan in relation with the acquisition of currencies.

It should be noted that Shares are neither guaranteed nor principal protected and that there can be no assurance that Shares are redeemed at the price for which they have been subscribed.

■ Typical investor profile

In the light of the Sub-Fund's investments, objectives and strategies, they are appropriate for investors who seek to protect their investments from volatile fluctuations. The aim of this Sub-Fund is to achieve a stable total return through a combination of capital appreciation and income.

An investment in the Sub-Fund is not a deposit in a bank or other insured depository institution. Investment may not be appropriate for all investors. The Sub-Fund is not intended to be a complete investment programme and investors should consider their long-term investment goals and financial needs when making an investment decision about the Sub-Fund. An investment in the Sub-Fund is intended to be a long-term investment. The Sub-Fund should not be used as a trading vehicle.

■ Shares Classes/Allocation of earnings

Shares of the Sub-Fund are divided into several Classes available to investors according to their quality. Shares may be further subdivided into Distribution and Accumulation Shares. Accumulation Shares automatically retain, and re-invest, all attributable incomes within the Sub-Fund when Distribution Shares pay any attributable income in the form of a dividend. This can either be paid by bank transfer into your bank account, or by cheque sent to your home address, in both cases in the currency specified (please note that bank transfer and foreign exchange costs will be borne by the investor).

Accumulation Shares in non-certificated registered form may appear as the most efficient way for investors to manage their account. Indeed they enable investors to give conversion and redemption instructions by letter, fax or telex with no need to return any Share certificates

Share Classes	Share Categories Available *	Dividend Payment for Distribution shares	Authorised Investors	Minimum Initial Subscription	Minimum Subsequent Subscription
AE Class	A / D	In September	All Investors	None	None
AHG Class	A / D	In September	All Investors	None	None
SE Class	A		All Investors. Shares only available through a network of distributors	None	None
Classic H (H)	A		All Investors. Shares only available through a networks of distributors specifically authorised by the Board. Difference with Class S : Reduced Subscription Fee	None	None
FE Class	A		All Investors Shares only available through a networks of distributors specifically authorized by the Board Difference with S Classes Category : Distribution fees	None	None
ME Class	A		Italian GPF and UCITS, UCIs or mandates authorized by the Board	None	None
IE Class	A / D	In September	Institutional Investors investing for their own account or for individuals within the framework of a collective savings or any comparable scheme as well as UCITS.	Equivalent in EUR of USD 500,000	None
IHG Class	A/ D	In September	Institutional Investors	Equivalent in GBP of USD 500,000	None
OE Class	A		Institutional Investors specifically authorized by the Board	Equivalent in EUR of USD 500,000	None
IHG0 Class	D	In September	Institutional Investors specifically authorised by the Board	Equivalent in GBP of USD 500,000	None
IHC Class	A		Institutional Investors	Equivalent in CHF of USD 500,000	None
AHC Class	A		All Investors	None	None

* A = Accumulation Shares / D = Distribution Shares

■ Fees and expenses

Fees charged to the investors:

Share Classes	Maximum subscription fee	Maximum conversion fee	Maximum redemption fee
AE Class	4.50%	1.00%	/
AHG Class	4.50%	1.00%	/
SE Class	3.00%	1.00%	/
Classic H (H)	1.00%	1.00%	/
FE Class	/	/	/
ME Class	2.50%	1.00%	/
IE Class	2.50%	1.00%	/
IHG Class	2.50%	1.00%	/
IHG0 Class	2.50%	1.00%	/
OE Class	5.00%	1.00%	/
IHC Class	2.50%	1.00%	/
AHC Class	4.50%	1.00%	/

Operating expenses charged directly to the Sub-Fund and reflected in the net asset value:

Share Classes	Maximum Management Fee	Maximum Administration Fee	Maximum Distribution Fee	« Taxe d'abonnement »*	Performance fee
AE Class	1.00%	0.30% p.a. of the NAV	/	0.05% p.a.	20% over the Performance objective : 7% p.a. minus fees ¹ applicable to each relevant class of Shares
AHG Class	1.00%	0.30% p.a. o the NAV	/	0.05% p.a.	
SE Class	1.30%	0.30% p.a. of the NAV	/	0.05% p.a.	
Classic H (H)	1.60%	0.30% p.a. of the NAV	/	0.05% p.a.	
FE Class	1.30%	0.30% p.a. of the NAV	0.40%	0.05% p.a.	
ME Class	0.50%	0.30% p.a. of the NAV	/	0.01% p.a.	20% over the Performance objective : 7% p.a. minus fees ¹ applicable to each relevant class of Shares
IE Class	0.50%	0.10% p.a. of the NAV	/	0.01% p.a.	
IHG Class	0.50%	0.10% p.a. of the NAV	/	0.01% p.a.	
IHG0 Class	0.50%	0.10% p.a. of the NAV	/	0.01% p.a.	/
OE Class	/	0.10% p.a. of the NAV	/	0.01% p.a.	/
IHC Class	0.50%	0.10% p.a. of the NAV	/	0.01% p.a.	20% over the Performance objective : 7% p.a. minus fees ¹ applicable to each relevant class of Shares
AHC Class	1.00%	0.30% p.a. of the NAV	/	0.05% p.a.	

¹ Are included the Management Fees, the Administration Fees and the "taxe d'abonnement".

* see paragraph Taxation of the Fund.

As described in the above table, a performance fee has been added to the Management fee for this Sub-Fund. The structure of the Performance fee is defined as follows:

Daily performance of the relevant Class is calculated on the basis of the change in Net Asset Value per share of the relevant Class (Performance Fee excluded) multiplied by the number of shares of the day. The performance of each relevant Class is compared with the Performance of the reference indicator (the "Performance Base").

A. Mechanism applicable until September 30, 2011 :

On a daily basis, the change in the value of the reference indicator is applied to amounts invested during the Observation Period (i.e. Net Asset Value at the beginning of the observation period, added to net subscriptions/redemptions over the same period). Each net

collection (subscriptions – redemptions on day x) shall contribute towards forming the provision for Performance Fee over the Observation Period or to the amount of Performance Fee due at the end of the Observation Period.

Observation Period

The Observation Period (the « Period ») is at least one year and up to three years maximum. The mechanism applied to determine the term of the Period is the following:

- At the end of the first year, the performance fee accrued for the relevant Class of Shares is definitively acquired. A new Period starts from scratch.
- In the absence of Performance fee accrued at the end of the first year, the Period follows through a second year. At the end of this second year, the accrued performance fee is definitively made. A new Period starts from scratch.
- In the absence of Performance fee accrued at the end of the second year, the Period follows through a third year. At the end of this last year, a new Period starts from scratch regardless of the perception or not of Performance fee.

The starting point of the first Period corresponds to the Performance fee introduction, the October 1st, 2009. Within each Period, each year will end the last banking day of September.

General

- If, over the Period, the relevant Class outperforms the Performance Base of the relevant Class of Shares, the variable proportion of Management Fees shall be 20% of the difference between the cumulative performance of the relevant Class of Shares and the relevant cumulative Performance Base.
- If, during the Period, the relevant Class of Shares outperforms the Performance Base from the start of the Period calculated over the same period, such outperformance shall be subject to a provision for Performance Fee when the redemption value (i.e. the Net Asset Value per share of the relevant Class of Shares) is calculated.
- If, over the Period, the relevant Class underperforms the aforementioned Performance Base, the variable proportion of the Management Fees shall be nil.
- If the relevant Class of Shares underperforms the Performance Base between two redemption values, any provision previously posted shall be readjusted by way of provision adjustment, the upper limit on provision re-adjustment being the sum of prior allocations over the period from the start of the Period.
- The said variable proportion shall only be definitively due at the close of each Period if, over the Period, the relevant Class of Shares has outperformed the Performance Base.
- The above Performance fee shall be directly charged to the statement of operations of each Class of Shares of the relevant Sub-Fund.
- The Auditor of the SICAV shall verify the method of calculating the Performance fee.

B. Mechanism applicable as from October 1, 2011:

Observation Period

The observation period (hereinafter the « Observation Period ») is at least one year and up to three years maximum.

The mechanism applied to determine the term of the Observation Period is the following:

- At the end of the first year, the performance fee accrued for the relevant Class of Shares is definitively acquired. A new Observation Period starts from scratch.
- In the absence of Performance fee accrued at the end of the first year, the Observation Period follows through a second year. At the end of this second year, the accrued performance fee is definitively made. A new Observation Period starts from scratch.
- In the absence of Performance fee accrued at the end of the second year, the Observation Period follows through a third year. At the end of this last year, a new Observation Period starts from scratch regardless of the perception or not of a Performance fee.

The Observation Period will start on October 1 and will end on September 30 of the next year.

Performance Fee

The performance fee is calculated separately for each Class of Shares. It shall be accrued daily, deducted and paid annually for each Class of Shares.

The performance fee is calculated as follows:

The Performance Fee is calculated by comparing the NAV of the Sub-Fund relevant Class of Shares and the reference asset (hereinafter the "Reference Asset").

The initial Reference Asset of the first Observation Period corresponds to the NAV of the Sub-Fund Class of Shares on September 30, 2011. The initial Reference Asset for the subsequent Observation Periods corresponds to the NAV of the Sub-Fund Class of Shares after deduction of all fees on the last Dealing Day of the previous Observation Period.

Any subsequent Reference Asset during an Observation Period corresponds to the Reference Asset of each relevant Class of Shares calculated on the previous Calculation Day, after taking into account subscription and redemption amounts of the Dealing Day, adjusted by the daily Performance Objective of the Sub-Fund.

This means notably, the following:

- If over the Observation Period, the NAV of each relevant Class of Shares is higher than the Reference Asset, the Performance Fee will represent 20% of the difference between those assets. If over the Observation Period, the NAV of the Sub-Fund relevant Class of Shares is lower than the Reference Asset, the Performance Fee will be nil.

- If over the Observation Period, the NAV of each relevant Class of Shares is higher than the Reference Asset, a provision for Performance Fee will be accrued in the NAV calculation process. In the event that the NAV of the Sub-Fund relevant Class of Shares becomes lower than the Reference Asset, all accruals for Performance Fees previously booked will be reversed. The reversals of provisions may not exceed the sum of the prior allocations.
- In case of redemption, the proportion of the accrued provision corresponding to the number of shares redeemed shall be immediately crystallized and due to the Management Company.
- The above Performance fee shall be directly charged to the statement of operations of each Class of Shares of the Sub-Fund.
- The Auditor of the SICAV shall verify the method of calculating the Performance fee.

■ Taxation of the Fund

The Fund is not subject to any taxes in Luxembourg on income or capital gains.

The only tax to which the Fund is subject is the "Taxe d'abonnement". Such tax is payable quarterly based on the value of the net assets of the Fund at the end of the relevant calendar quarter at the rate of 0.05% per annum, decreasing to 0.01% for I Classes Category, M Classes Category, O Classes Category, Money Market Sub-Funds and Reserve sub-funds.

Interest and dividend income receive by the Fund may be subject to non-recoverable withholding tax in the countries of origin.

■ Taxation of the Shareholders

Under present Luxembourg law, no tax is levied neither ordinary income nor capital gains. Only Luxembourg residents are subject to Luxembourg tax. However, in accordance with the European Union Savings Directive ("EUSD") effective from 1st July 2005, certain sub-funds are subject to a withholding tax when a Luxembourg paying agent makes distributions from and redemption of shares to investors residing in another Member State. Unless the individual investors specifically request to be brought within the EUSD exchange of information regime, such distributions and redemptions will be subject to withholding tax at the rate of 20% until 31/12/2010 and 35% thereafter.

Prospective investors should inform themselves of, and where appropriate, take advice on the laws and regulations (such as those relating to taxation and exchange controls) applicable to the subscription, holding and redemption of units in the country of their citizenship, residence or domicile.

■ NAV Calculation and Prices Publication

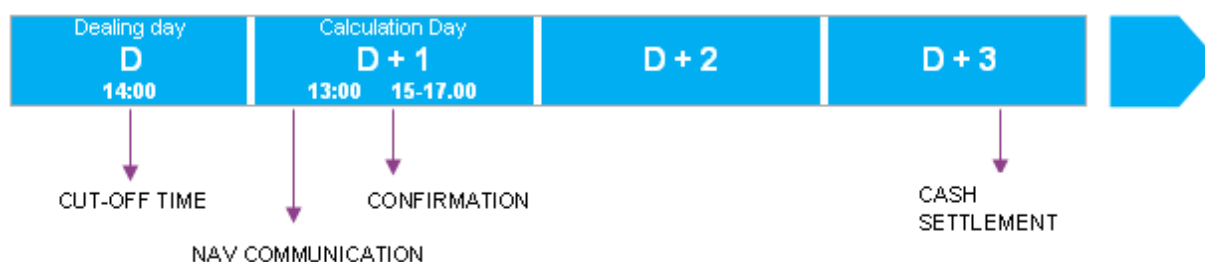
The Net Asset Value ("NAV") per Share of the Sub-Fund is calculated in Luxembourg on any Calculation Day and is dated from the Dealing Day being Business Day preceding the Calculation Day. A Business Day is defined as being any day during which banks are opened for business in Luxembourg.

The NAV per share of each Dealing Day will be available from the Administration Agent as well as on Reuters and will also be published in any national newspaper of a country in which the Fund is authorised for public distribution, if so decided by the Board.

■ Subscriptions / Redemptions and Conversions of Shares

Shares may be sold or redeemed (and/or converted) on any Dealing Day, at their respective Dealing Price (Net Asset Value) in accordance with the Articles of Incorporation. To subscribe / redeem or convert shares, instructions may be given by fax, telex or by post either to the Fund or to an authorised distributor. Allotment of shares will be executed following the timing set out in the schedules below (Luxembourg time).

DEALING TIMES



Allotment of shares is conditional upon receipt by the Custodian of cleared monies within three Business Days of the relevant Dealing Day. If timely settlement is not made an application may lapse and be cancelled. All applications will be duly confirmed by contract notes. Unless otherwise or clearly specified by the investor, shares will be purchased or redeemed at the Dealing Price calculated in the base currency of the Sub-Fund. In the absence of specific instructions, Shares will be issued as non-certificated accumulation Shares of the Classic class. If on any Dealing Day, the Fund receives request for redemptions (or conversions) of Shares equalling or exceeding 10 per cent of the number of Shares or of the assets of the Sub-Fund, it may declare that such redemptions (or conversions) are deferred until a Dealing Date such as all or certain investments of the Sub-Fund have been sold. Conversions from Shares of one Class of a Sub-Fund to

Shares of another Class of either the same or different Sub-Fund are not permitted except if any investor complies with all the conditions required for the Class into which the conversion is made. Except in the case of a suspension of deferral or right to redeem or purchase Shares of the relevant Sub-Funds, a request for conversion, once made, may not be withdrawn. The Fund may temporarily suspend or restrict the issue, redemption and conversion shares if necessary in order to protect the Shareholders' interest.

■ Prohibition of Late Trading and Market Timing

Late Trading and Market Timing practices are strictly prohibited as further detailed in the Fund's full prospectus.

■ Performance of the Sub-Fund

The performance of the Sub-Fund is presented in the Part B Statistics attached hereto. Performance is expressed in the Fund accounting year. (1st July to 30 June). For more recent information investors may refer to the latest periodical reports available or consult Amundi Funds web site, www.amundi-funds.com.

■ Additional Important Information

Legal structure:	The Sub-Fund is a sub-fund of Amundi Funds, an umbrella fund, organised as a "société d'investissement à capital variable" under part I of the law of 20 December 2002 on undertakings for collective investment.
Supervisory Authority:	Commission de Surveillance du Secteur Financier, Luxembourg (www.cssf.lu).
Management Company	Amundi Luxembourg, 5, Allée Scheffer, L-2520 Luxembourg.
Investment Manager:	Amundi acting through its main establishment (90, boulevard Pasteur, F-75015 Paris, France) or its London branch (41 Lothbury, London EC2R 7HF, United Kingdom).
Sponsor and Distributor:	Amundi, 90, boulevard Pasteur, F-75015 Paris, France.
Custodian :	CACEIS Bank Luxembourg, 5 allée Scheffer, L-2520 Luxembourg.
Registrar, Transfer and Paying Agent:	CACEIS Bank Luxembourg, 5 allée Scheffer, L-2520 Luxembourg.
Administrative Agent :	Société Générale Securities Services Luxembourg, 16, Boulevard Royal L-2449 Luxembourg
Independent Auditor:	PricewaterhouseCoopers s.a.r.l., 400 route d'Esch, L-1471 Luxembourg.
Shareholders meeting:	The annual general meeting of shareholders of the Fund will be held in Luxembourg at 11 a.m. on the last Friday of October in each year (or if such day is not a bank business day in Luxembourg, on the next following bank business day in Luxembourg)
For further information, please contact Amundi Luxembourg, 5, Allée Scheffer, L-2520 Luxembourg.	

AMUNDI FUNDS VOLATILITY EURO EQUITIES - C

Acc. Shares

Reference currency: EUR

CAUTION

Past performance does not guarantee future returns.

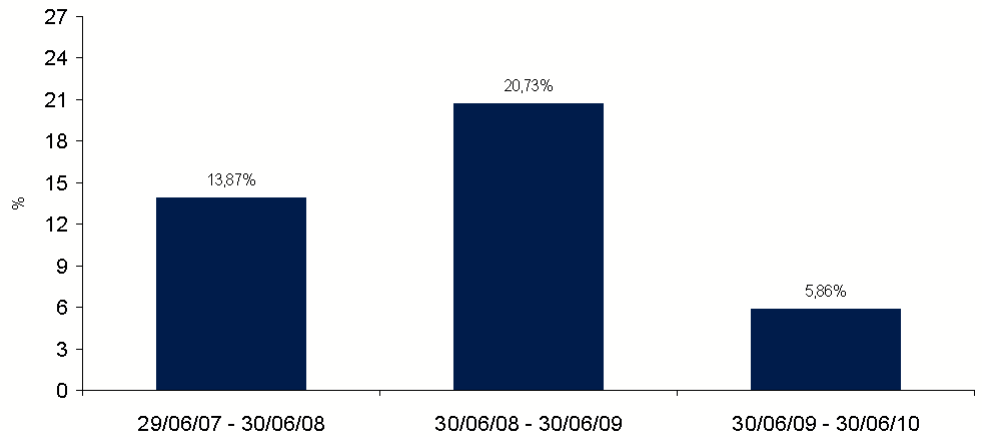
The value of an investment can rise or fall with market fluctuations, and you may lose the amount originally invested.

The TER does not include subscription and redemption fees.

Data relating to transactions have to be analysed depending on the investment strategy of the Sub-Fund.

Performance is calculated taking into consideration net returns.

■ PERFORMANCE AT 30/06/10



■ PERFORMANCE AT 30/06/10

Performances	1 year	3 years	5 years
AMUNDI FUNDS VOLATILITY EURO EQUITIES - C	5.86%	45.53%	-
None	-	-	-

■ PUBLICATION DATE

21/10/10